

## How to fix the blinking issues for the Great Bee tv box?

### Step 1:

There is a **setup button** on the remote controller, press **setup button** to enter settings

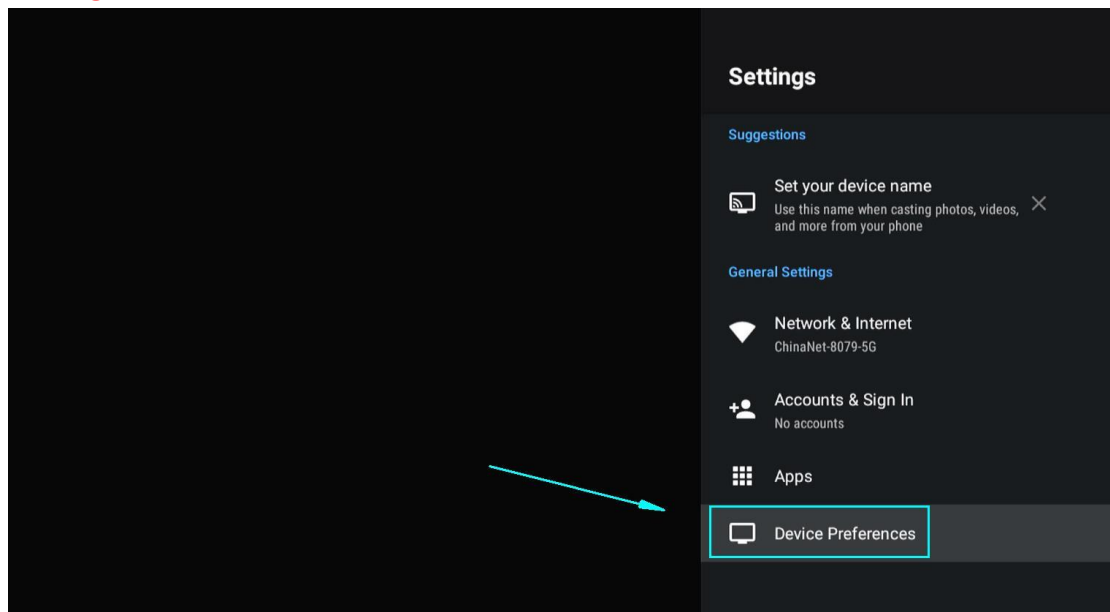
(Attached below are pictures of different remote controllers for your reference)

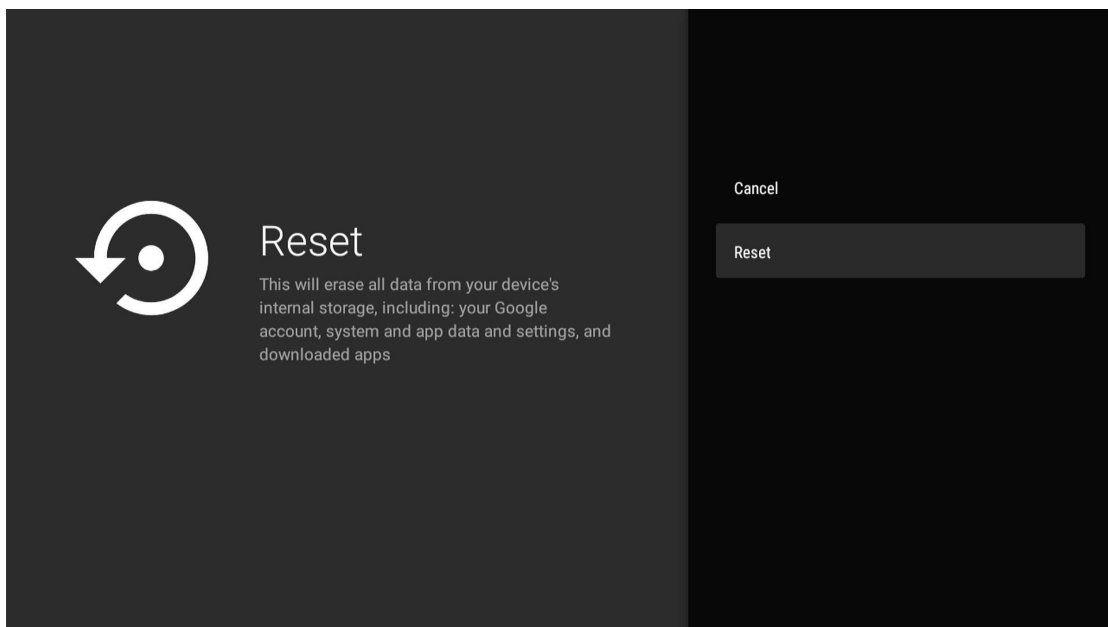
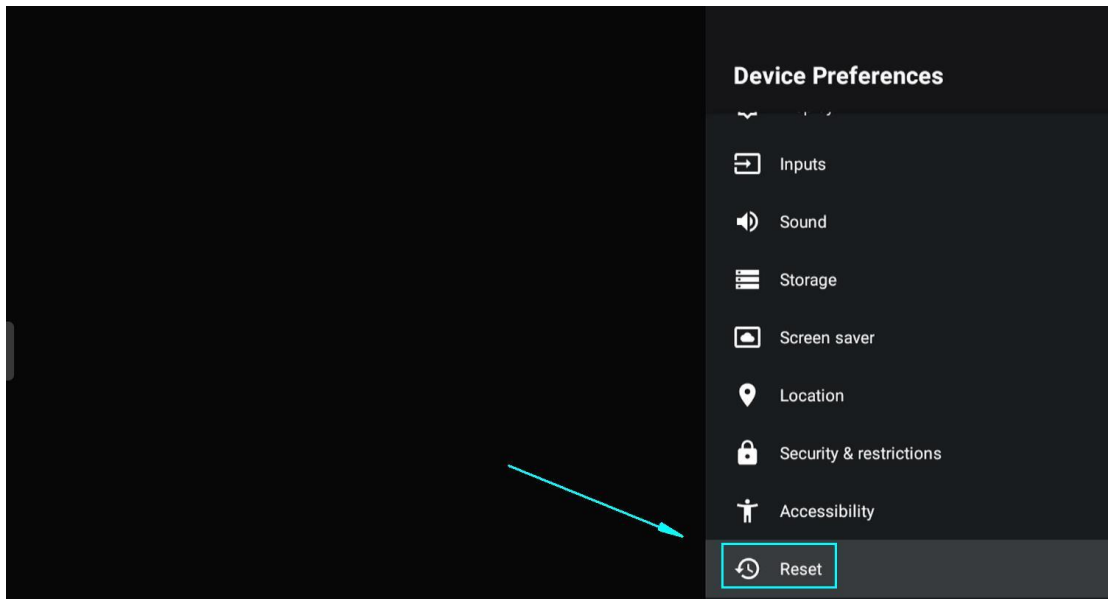


### Step 2:

Follow these steps to do reset

**Settings - Device Preferences - Reset**





**Step 3:**

If its a black box, you will need to reinstall the APP, pls follow the instructions below to install it.

[http://162.221.206.248/How\\_to\\_install\\_APK.pdf](http://162.221.206.248/How_to_install_APK.pdf)